

# Certificate of Analysis

QA SAMPLE - INFORMATIONAL ONLY

1 of 3

ICAL ID: 20220214-049  
 Sample: CA220214-016-038  
 Koi CBD - THC-O w/ DELTA 8 | Blue Walker (Sativa)  
 Strain: Koi CBD - THC-O w/ DELTA 8 | Blue Walker (Sativa)  
 Category: Concentrates & Extracts

Koi CBD  
 Lic. #  
 14631 Best Ave  
 Norwalk, CA 90650  
 Lic. #

Batch#: 2242BB1223  
 Batch Size Collected:  
 Total Batch Size:  
 Collected: 02/17/2022; Received: 02/17/2022  
 Completed: 02/17/2022

Moisture <b>NT</b> Water Activity <b>NT</b>	Total THC <b>0.14%</b>	Total CBD <b>ND</b>	Total Cannabinoids <b>3.18%</b>	Total Terpenes <b>34.040 mg/g</b>
------------------------------------------------------	---------------------------	------------------------	------------------------------------	--------------------------------------

## Summary

SOP Used	Date Tested	Pass
Batch		Pass
Cannabinoids	POT-PREP-001 02/16/2022	Complete
Terpenes	TERP-PREP-001 02/16/2022	Complete
Residual Solvents	RS-PREP-001 02/16/2022	Pass
Microbials	MICRO-PREP-001 02/17/2022	Pass
Mycotoxins	PESTMYCO-LC-PREP-001 02/16/2022	Pass
Heavy Metals	HM-PREP-001 02/16/2022	Pass
Foreign Matter	FM-PREP-001 02/16/2022	Pass
Pesticides	PESTMYCO-LC-PREP-001 / PEST-GC-PREP-001 02/16/2022	Pass



Scan to see results

## Cannabinoid Profile

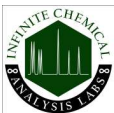
Analyte	LOQ (mg/g)	LOD (mg/g)	%	mg/g	Analyte	LOQ (mg/g)	LOD (mg/g)	%	mg/g
THCa	0.3680	0.0924	ND	ND	CBDV	0.3680	0.0421	ND	ND
Δ9-THC	0.3680	0.1024	0.14	1.4	CBN	0.3680	0.0780	ND	ND
Δ8-THC	0.3680	0.0506	3.04	30.4	CBGa	0.3965	0.1322	ND	ND
THCV	0.3680	0.0423	ND	ND	CBG	0.3920	0.1307	ND	ND
CBDa	0.3680	0.0951	ND	ND	CBC	0.4549	0.1516	ND	ND
CBD	0.3680	0.0815	ND	ND	<b>Total THC</b>			<b>0.14</b>	<b>1.37</b>
					<b>Total CBD</b>			<b>ND</b>	<b>ND</b>
					<b>Total</b>			<b>3.18</b>	<b>31.80</b>

Total THC=THCa \* 0.877 + Δ9-THC; Total CBD = CBDa \* 0.877 + CBD. LOD= Limit of Detection, LOQ= Limit of Quantitation, ND= Not Detected, NR= Not Reported. Potency is reported on a dry weight basis. Instrumentation and analysis SOPs used: Cannabinoids:UHPLC-DAD(POT-INST-005),Moisture:Moisture Analyzer(MOISTURE-001),Water Activity:Water Activity Meter(WA-INST-002), Foreign Material:Microscope(FOREIGN-001). Density measured at 19-24 °C, Water Activity measured at 0-90% RH. All QA submitted by the client, All CA State Compliance sampled using SAMPL-SOP-001.

## Terpene Profile

Analyte	LOQ (mg/g)	LOD (mg/g)	%	mg/g	Analyte	LOQ (mg/g)	LOD (mg/g)	%	mg/g
β-Myrcene	0.025	0.010	1.1220	11.220	p-Cymene	0.025	0.010	0.0070	0.070
β-Caryophyllene	0.025	0.010	0.5850	5.850	α-Terpinene	0.025	0.010	0.0040	0.040
α-Pinene	0.025	0.010	0.4620	4.620	cis-Nerolidol	0.025	0.010	ND	ND
δ-Limonene	0.025	0.010	0.4200	4.200	cis-Ocimene	0.025	0.010	<LOQ	<LOQ
β-Pinene	0.025	0.010	0.2980	2.980	δ-3-Carene	0.025	0.010	ND	ND
Linalool	0.025	0.010	0.1880	1.880	Eucalyptol	0.025	0.010	ND	ND
α-Humulene	0.025	0.010	0.1500	1.500	γ-Terpinene	0.025	0.010	ND	ND
α-Bisabolol	0.025	0.010	0.1110	1.110	Geraniol	0.025	0.010	<LOQ	<LOQ
Caryophyllene Oxide	0.025	0.010	0.0190	0.190	(-)-Guaiaol	0.025	0.010	ND	ND
Camphene	0.025	0.010	0.0160	0.160	(-)-Isopulegol	0.025	0.010	ND	ND
trans-Nerolidol	0.025	0.010	0.0130	0.130	trans-Ocimene	0.025	0.010	ND	ND
Terpinolene	0.025	0.010	0.0090	0.090	<b>Total</b>			<b>3.4040</b>	<b>34.040</b>

NR= Not Reported (no analysis was performed), ND= Not Detected (the concentration is less than the Limit of Detection (LOD)). Analytical instrumentation used: HS-GC-MS; samples analyzed according to SOP TERP-INST-003.



Infinite Chemical Analysis Labs  
 8380 Miramar Mall #102  
 San Diego, CA  
 (858) 623-2740  
 www.infiniteCAL.com  
 Lic# C8-0000019-LIC

*Josh M Swider*

Josh Swider  
 Lab Director, Managing Partner  
 02/17/2022

Confident Cannabis  
 All Rights Reserved  
 support@confidentcannabis.com  
 (866) 506-5866  
 www.confidentcannabis.com



This product has been tested by Infinite Chemical Analysis, LLC using valid testing methodologies and a quality system as required by state law. All LQC samples were performed and met the prescribed acceptance criteria in 16 CCR section 15730, pursuant to 16 CCR section 15726(e)(13). Values reported relate only to the product tested. Infinite Chemical Analysis, LLC makes no claims as to the efficacy, safety or other risks associated with any detected or non-detected levels of any compounds reported herein. This Certificate shall not be reproduced except in full, without the written approval of Infinite Chemical Analysis, LLC.



# Certificate of Analysis

QA SAMPLE - INFORMATIONAL ONLY

2 of 3

ICAL ID: 20220214-049  
Sample: CA220214-016-038  
Koi CBD - THC-O w/ DELTA 8 | Blue Walker (Sativa)  
Strain: Koi CBD - THC-O w/ DELTA 8 | Blue Walker (Sativa)  
Category: Concentrates & Extracts

Koi CBD  
Lic. #  
14631 Best Ave  
Norwalk, CA 90650  
Lic. #

Batch#: 2242BB1223  
Batch Size Collected:  
Total Batch Size:  
Collected: 02/17/2022; Received: 02/17/2022  
Completed: 02/17/2022

## Residual Solvent Analysis

Category 1	LOQ	LOD	Limit	Status	Category 2	LOQ	LOD	Limit	Status	Category 2	LOQ	LOD	Limit	Status			
	µg/g	µg/g	µg/g	µg/g		µg/g	µg/g	µg/g	µg/g		µg/g	µg/g	µg/g	µg/g			
1,2-Dichloro-Ethane	ND	1	0.5	1	Pass	Acetone	ND	300	200	5000	Pass	n-Hexane	ND	35	20	290	Pass
Benzene	ND	1	0.5	1	Pass	Acetonitrile	ND	150	100	410	Pass	Isopropanol	ND	300	200	5000	Pass
Chloroform	ND	1	0.5	1	Pass	Butane	ND	300	200	5000	Pass	Methanol	ND	300	200	3000	Pass
Ethylene Oxide	ND	1	0.5	1	Pass	Ethanol	ND	300	200	5000	Pass	Pentane	ND	300	200	5000	Pass
Methylene-Chloride	ND	1	0.5	1	Pass	Ethyl-Acetate	ND	300	200	5000	Pass	Propane	ND	300	200	5000	Pass
Trichloroethene	ND	1	0.5	1	Pass	Ethyl-Ether	ND	300	200	5000	Pass	Toluene	ND	150	100	890	Pass
						Heptane	ND	300	200	5000	Pass	Xylenes	ND	150	100	2170	Pass

NR= Not Reported (no analysis was performed), ND= Not Detected (the concentration is less than the Limit of Detection (LOD)). Analytical instrumentation used: HS-GC-MS; samples analyzed according to SOP RS-INST-003.

## Heavy Metal Screening

	LOQ	LOD	Limit	Status	
	µg/g	µg/g	µg/g	µg/g	
Arsenic	ND	0.009	0.003	0.2	Pass
Cadmium	ND	0.002	0.001	0.2	Pass
Lead	0.017	0.004	0.001	0.5	Pass
Mercury	ND	0.014	0.005	0.1	Pass

NR= Not Reported (no analysis was performed), ND= Not Detected (the concentration is less than the Limit of Detection (LOD)). Analytical instrumentation used: ICP-MS; samples analyzed according to SOP HM-INST-003.

## Microbiological Screening

	Limit	Result	Status
	CFU/g	CFU/g	
Aspergillus flavus		Not Detected	Pass
Aspergillus fumigatus		Not Detected	Pass
Aspergillus niger		Not Detected	Pass
Aspergillus terreus		Not Detected	Pass
STEC		Not Detected	Pass
Salmonella SPP		Not Detected	Pass

ND=Not Detected. Analytical instrumentation used:qPCR; samples analyzed according to SOP MICRO-INST-001.



Infinite Chemical Analysis Labs  
8380 Miramar Mall #102  
San Diego, CA  
(858) 623-2740  
www.infiniteCAL.com  
Lic# C8-0000019-LIC

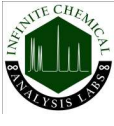
*Josh M Swider*

Josh Swider  
Lab Director, Managing Partner  
02/17/2022

Confident Cannabis  
All Rights Reserved  
support@confidentcannabis.com  
(866) 506-5866  
www.confidentcannabis.com



This product has been tested by Infinite Chemical Analysis, LLC using valid testing methodologies and a quality system as required by state law. All LQC samples were performed and met the prescribed acceptance criteria in 16 CCR section 15730, pursuant to 16 CCR section 15726(e)(13). Values reported relate only to the product tested. Infinite Chemical Analysis, LLC makes no claims as to the efficacy, safety or other risks associated with any detected or non-detected levels of any compounds reported herein. This Certificate shall not be reproduced except in full, without the written approval of Infinite Chemical Analysis, LLC.



# Certificate of Analysis

QA SAMPLE - INFORMATIONAL ONLY

3 of 3

ICAL ID: 20220214-049  
 Sample: CA220214-016-038  
 Koi CBD - THC-O w/ DELTA 8 | Blue Walker (Sativa)  
 Strain: Koi CBD - THC-O w/ DELTA 8 | Blue Walker (Sativa)  
 Category: Concentrates & Extracts

Koi CBD  
 Lic. #  
 14631 Best Ave  
 Norwalk, CA 90650  
 Lic. #

Batch#: 2242BB1223  
 Batch Size Collected:  
 Total Batch Size:  
 Collected: 02/17/2022; Received: 02/17/2022  
 Completed: 02/17/2022

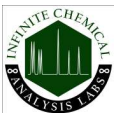
## Chemical Residue Screening

Category 1	LOQ	LOD	Status	Mycotoxins	LOQ	LOD	Limit	Status		
	µg/g	µg/g	µg/g		µg/kg	µg/kg	µg/kg			
Aldicarb	ND	0.030	0.008	Pass	B1	ND	8.98	2.96	Tested	
Carbofuran	ND	0.030	0.005	Pass	B2	ND	10.17	3.36	Tested	
Chlordane	ND	0.075	0.025	Pass	G1	ND	5.25	1.73	Tested	
Chlorfenapyr	ND	0.075	0.025	Pass	G2	ND	6.26	2.07	Tested	
Chlorpyrifos	ND	0.046	0.015	Pass	Ochratoxin A	ND	13.37	4.41	20	Pass
Coumaphos	ND	0.030	0.004	Pass	Total Aflatoxins	ND		20	Pass	
Daminozide	ND	0.053	0.018	Pass						
Dichlorvos	ND	0.055	0.018	Pass						
Dimethoate	ND	0.030	0.006	Pass						
Ethoprophos	ND	0.030	0.006	Pass						
Etofenprox	ND	0.030	0.004	Pass						
Fenoxycarb	ND	0.030	0.004	Pass						
Fipronil	ND	0.050	0.017	Pass						
Imazalil	ND	0.030	0.009	Pass						
Methiocarb	ND	0.030	0.002	Pass						
Mevinphos	ND	0.030	0.008	Pass						
Paclbutrazol	ND	0.030	0.009	Pass						
Parathion Methyl	ND	0.024	0.008	Pass						
Propoxur	ND	0.030	0.008	Pass						
Spiroxamine	ND	0.030	0.006	Pass						
Thiacloprid	ND	0.030	0.005	Pass						

Category 2	LOQ	LOD	Limit	Status	Category 2	LOQ	LOD	Limit	Status		
	µg/g	µg/g	µg/g	µg/g		µg/g	µg/g	µg/g	µg/g		
Abamectin	ND	0.099	0.033	0.1	Pass	Kresoxim Methyl	ND	0.030	0.007	0.1	Pass
Acephate	ND	0.030	0.007	0.1	Pass	Malathion	ND	0.030	0.003	0.5	Pass
Acequinocyl	ND	0.046	0.015	0.1	Pass	Metalaxyl	ND	0.030	0.005	2	Pass
Acetamiprid	ND	0.030	0.005	0.1	Pass	Methomyl	ND	0.030	0.009	1	Pass
Azoxystrobin	ND	0.030	0.005	0.1	Pass	Myclobutanil	ND	0.030	0.007	0.1	Pass
Bifenazate	ND	0.030	0.007	0.1	Pass	Naled	ND	0.030	0.008	0.1	Pass
Bifenthrin	ND	0.030	0.004	3	Pass	Oxamyl	ND	0.030	0.007	0.5	Pass
Boscalid	ND	0.030	0.008	0.1	Pass	Pentachloronitrobenzene	ND	0.054	0.018	0.1	Pass
Captan	ND	0.358	0.120	0.7	Pass	Permethrin	ND	0.030	0.002	0.5	Pass
Carbaryl	ND	0.030	0.006	0.5	Pass	Phosmet	ND	0.030	0.005	0.1	Pass
Chlorantraniliprole	ND	0.030	0.009	10	Pass	Piperonyl Butoxide	ND	0.030	0.003	3	Pass
Clofentezine	ND	0.030	0.002	0.1	Pass	Prallethrin	ND	0.071	0.023	0.1	Pass
Cyfluthrin	ND	0.056	0.019	2	Pass	Propiconazole	ND	0.030	0.009	0.1	Pass
Cypermethrin	ND	0.181	0.060	1	Pass	Pyrethrins	ND	0.030	0.003	0.5	Pass
Diazinon	ND	0.030	0.005	0.1	Pass	Pyridaben	ND	0.030	0.002	0.1	Pass
Dimethomorph	ND	0.030	0.005	2	Pass	Spinetoram	ND	0.030	0.001	0.1	Pass
Etoxazole	ND	0.030	0.004	0.1	Pass	Spinosad	ND	0.030	0.001	0.1	Pass
Fenhexamid	ND	0.034	0.011	0.1	Pass	Spiromesifen	ND	0.030	0.009	0.1	Pass
Fenpyroximate	ND	0.030	0.004	0.1	Pass	Spirotetramat	ND	0.030	0.008	0.1	Pass
Flonicamid	ND	0.035	0.012	0.1	Pass	Tebuconazole	ND	0.030	0.006	0.1	Pass
Fludioxonil	ND	0.036	0.012	0.1	Pass	Thiamethoxam	ND	0.030	0.008	5	Pass
Hexythiazox	ND	0.030	0.001	0.1	Pass	Trifloxystrobin	ND	0.030	0.003	0.1	Pass
Imidacloprid	ND	0.033	0.011	5	Pass						

Other Analyte(s): THC-O-Acetate: 13.32 %

NR= Not Reported (no analysis was performed), ND= Not Detected (the concentration is less than the Limit of Detection (LOD)). Analytical instrumentation used: LC-MS-MS & GC-MS-MS; samples analyzed according to SOPs PESTMYCO-LC-INST-004 and PEST-GC-INST-003.



Infinite Chemical Analysis Labs  
 8380 Miramar Mall #102  
 San Diego, CA  
 (858) 623-2740  
 www.infiniteCAL.com  
 Lic# C8-0000019-LIC

*Josh M Swider*

Josh Swider  
 Lab Director, Managing Partner  
 02/17/2022

Confident Cannabis  
 All Rights Reserved  
 support@confidentcannabis.com  
 (866) 506-5866  
 www.confidentcannabis.com



This product has been tested by Infinite Chemical Analysis, LLC using valid testing methodologies and a quality system as required by state law. All LQC samples were performed and met the prescribed acceptance criteria in 16 CCR section 15730, pursuant to 16 CCR section 15726(e)(13). Values reported relate only to the product tested. Infinite Chemical Analysis, LLC makes no claims as to the efficacy, safety or other risks associated with any detected or non-detected levels of any compounds reported herein. This Certificate shall not be reproduced except in full, without the written approval of Infinite Chemical Analysis, LLC.

2/18/2022

Dear Koi CBD,

Based on data obtained from UHPLC-PDA and GC-MS for Koi CBD - HHC w/ THC-O + DELTA 8 | Blue Walker (Sativa), the largest signal displayed in Figure 1 (directly to the left of the signal labeled "THC-O-ACETATE") appears to be consistent with another isomer of THC-O-Acetate, which we presume to be Delta-8-THC-O-Acetate. Since there are no reference standards for Delta-8-THC-O-Acetate currently available, neither a definitive assignment nor a precise quantitation can be performed. When Koi CBD - HHC w/ THC-O + DELTA 8 | Blue Walker (Sativa) was analyzed by GC-MS, the mass spectrum of the largest signal presents a molecular ion of 356.2 m/z, the expected mass of Delta-8-THC-O-Acetate. When this mass spectrum was cross-referenced to the NIST mass spectral database, the signal provides excellent agreement with the reference spectrum for Delta-8-THC-O-Acetate. Furthermore, the UV profiles of the signals correspond with a cannabinoid of this type, yet have a unique retention time compared to other known cannabinoids.

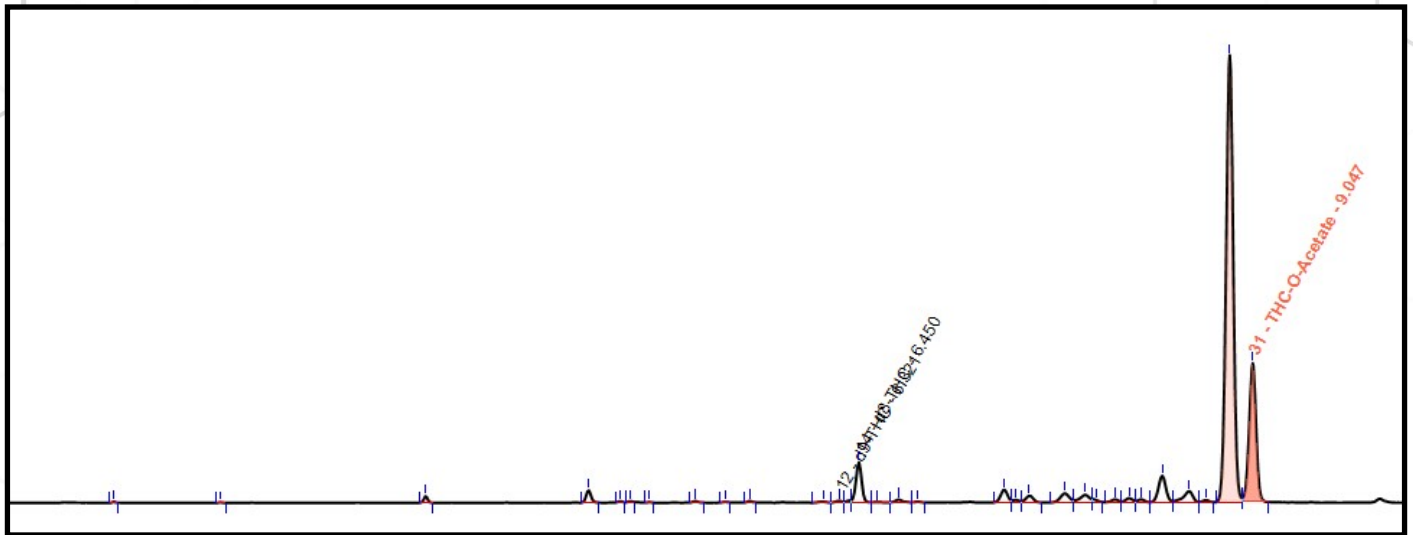


Figure 1. UHPLC-PDA chromatogram of Koi CBD - HHC w/ THC-O + DELTA 8 | Blue Walker (Sativa)

The data allows us to provide a preliminary assignment of the large signal as Delta-8-THC-O-Acetate. The estimated concentration of this signal equates to ~44%. The estimated combined concentration of Delta-8- and Delta-9-THC-O-Acetate is ~57%.

As reference standards become available, a more unequivocal assignment and precise quantitation will be possible. As it stands, the data are all consistent with Delta-8-THC-O-Acetate.

Sincerely,

*Erik Paulson*

Erik Paulson, Ph.D.  
Lab Manager